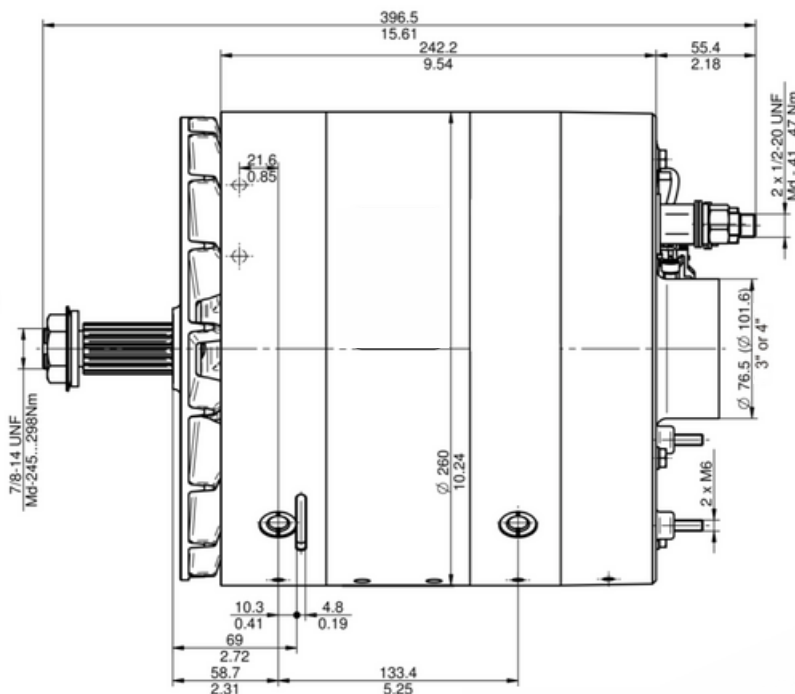
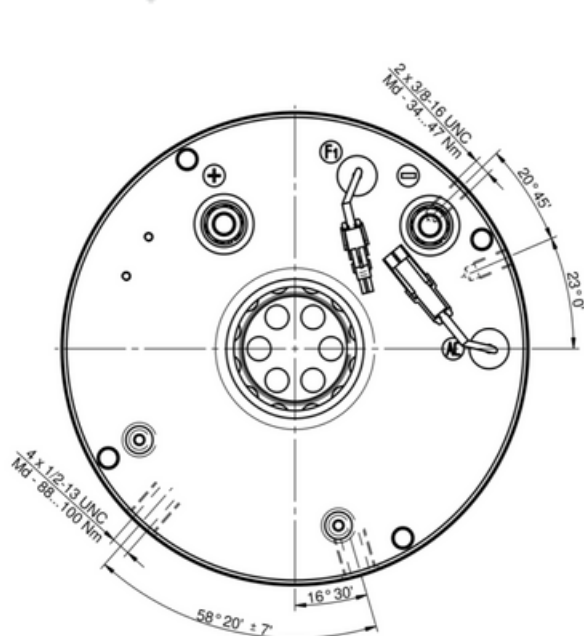


28V / 450A

Cradle

Duct



Part Number: AA106-221716-243 / AA104-221715-244

Duct without noise suppression filter

Part Number: AA107-221716-241 / AA105-221715-242

Duct with noise suppression filter

HEAVY DUTY BRUSHLESS ALTERNATOR



- The compact 25AT design Heavy Duty brushless alternator, is an innovative power generating system, best suited for applications demanding high output at low rpm.
- This alternator exceeds 85% efficiency levels due to the precision assembly process and stator winding technology.
- The impressive output at engine idle makes this alternator a natural choice for a wide range of transit vehicles.

- High output at @2000 RPM
- High Efficiency over 85,0 %
- Low Inertia Advantage
- Low RPM Turn On
- Air Cooled Alternator

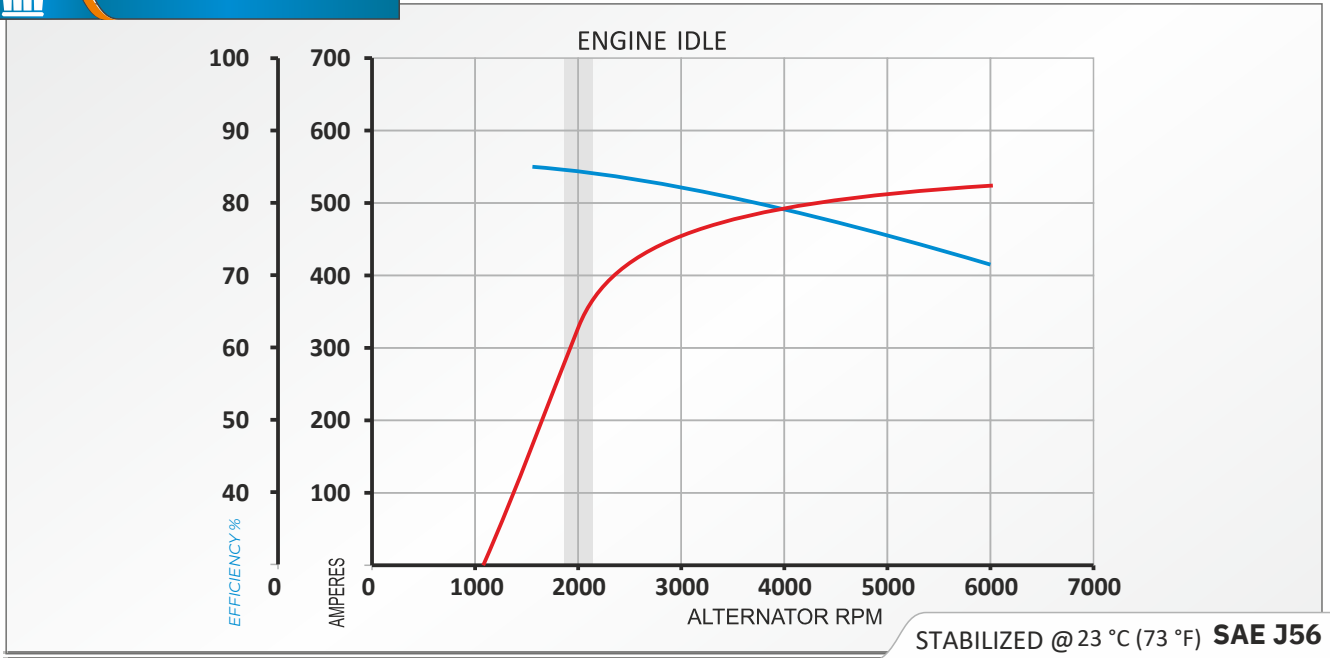
- Robust construction
- Easy Installation
- Long bearing life
- Industry Std Mounting & Electrical Interface
- Ground isolated



Applications

- Transit Bus • Construction • Fire & Rescue • Agriculture • Military • Mining
- Marine & Rail (E.I.P. Compliant)

Performance Curve



Specifications

System Voltage	24V	Mounting	Cradle Style
Rated Output:	450A	Speed limits:	6500 RPM
Output @ 2000 rpm:	320A	Weight:	46 kg
Temperature limits:	-Low: -40°C / -High: 125°C	Regulator:	Remote
Turn on speed:(RPM)	1080	Rotation:	CW or CCW

Connections

