

DELSTAR

HD BRUSHLESS | SERIES 170

100-17202,-D

28 Volts 200 Amps

PRODUCT SPECIFICATIONS

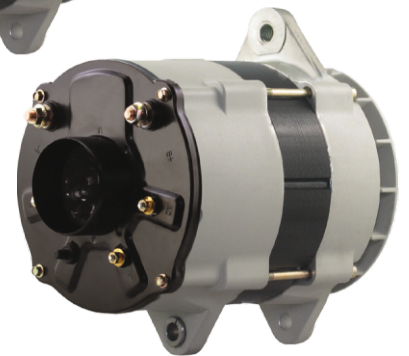
| | |
|--------------------------------|---------------------------------------|
| Part number | 100-17202 |
| System Voltage | 24V |
| Rated Output | 200A |
| Output @ 2000 rpm | 114A |
| Ground | Isolated |
| Mounting | J180 4" Hinge |
| Rotation | Bidirectional |
| Temperature limits: | |
| Low | -40°C / -40°F |
| High | 110°C / 230°F |
| High | 125°C / 257°F (with fresh air intake) |
| Speed limits: | |
| | 8000 RPM continuous |
| | 9000 RPM intermittent |
| Coating | Corrosion-Resistant E-Coated |
| Weight | 38 Lbs / 17.4 Kg. |
| Regulator | Integral |
| Excitation | Self-Excite |
| Indicator Light | Yes |
| Remote Sense | Yes |
| Soft Start Delay (SSD) | Yes |
| Load Response Control (LRC) | Yes |
| Overvoltage Shut-Down (OSD) | Yes |
| Field Short Circuit Protection | Yes |
| Load Dump Protection | Yes |

RECOMMENDED FOR:

- School & Shuttle Buses
- Utility Vehicles
- Marine & Mining
- Agricultural
- Construction & Industrial



100-17202



100-17202-D
with air intake cover

NOTE:

This DelStar 100-17202 alternator, meets the marine requirements for Ignition Protection on gas or diesel engines of ISO 8846, USCG, stated in Title 33 CFR 183.410, SAE J1171 and International CE Standards.

PERFORMANCE CURVES

