

# HIGH PERFORMANCE SOLENOIDS

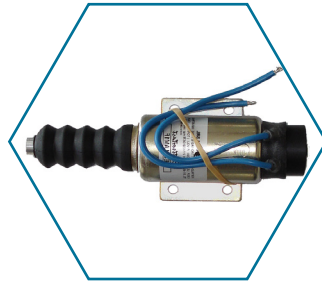
**BERMAN**  
BERMANTEC.COM

*Elektrostart*

**DOUBLE COIL SOLENOIDS  
CONTINUOUS DUTY**



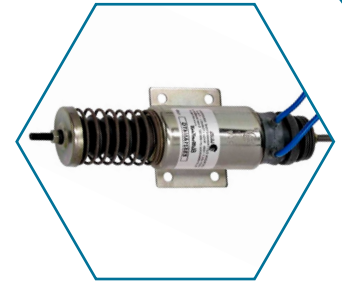
**E-0411/ E-0421**



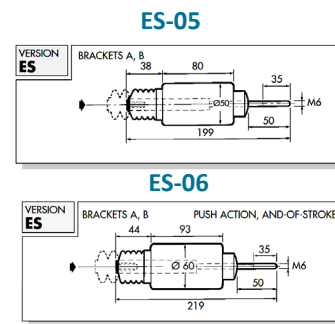
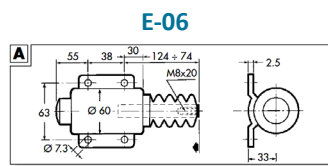
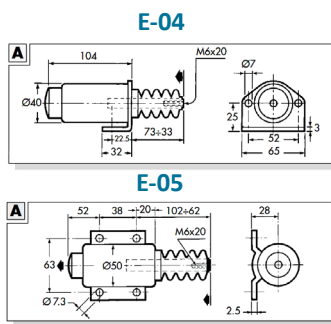
**E-0510/E-0520**



**E-0610/E-0620**



**ES-SERIES**



**FOR PULLING:**

**12 V**

Model	Max. length of the stroke (mm)	Force at 25mm (N)	Pull current (A)	Hold current (A)	Ref. Elektrostart
<b>E-0411</b>	40	34	31	0.53	E411AM1F
<b>E-0510</b>	40	66	41	0.5	E511AM1F
<b>E-0610</b>	50	107	47	0.65	E611AM1F

**24 V**

Model	Max. length of the stroke (mm)	Force at 25mm (N)	Pull current (A)	Hold current (A)	Ref. Elektrostart
<b>E-0421</b>	40	34	15.2	0.29	E421AM1F
<b>E-0520</b>	40	66	23	0.28	E521AM1F
<b>E-0620</b>	50	107	24.5	0.3	E621AM1F

**FOR PULLING AND PUSHING:**

**12 V**

Model	Max. length of the stroke (mm)	Force at 25mm (N)	Pull current (A)	Hold current (A)	Ref. Elektrostart
<b>ES-0510</b>	35	66	41	0.5	ES-511AM4TG
<b>ES-0610</b>	35	107	47	0.65	ES-611AM3TG

**24 V**

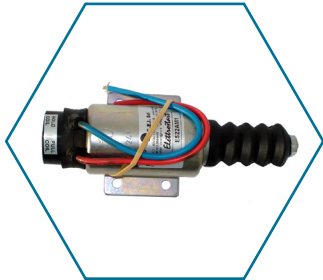
Model	Max. length of the stroke (mm)	Force at 25mm (N)	Pull current (A)	Hold current (A)	Ref. Elektrostart
<b>ES-0520</b>	35	66	23	0.28	ES-521AM4TG
<b>ES-0620</b>	35	107	24.5	0.3	ES-621AM3TG

# HIGH PERFORMANCE SOLENOIDS

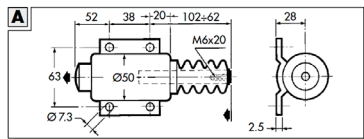
## Elettrostart

### DOUBLE COIL SOLENOIDS CONTINUOUS DUTY

FOR PULLING:



EH-0512/EH-0522



EH-0512/EH-0522

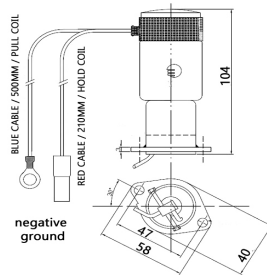
12 V

Model	Max. length of the stroke (mm)	Force at 25mm (N)	Pull current (A)	Hold current (A)	Ref. Elettrostart
EH-0512	40	66	41	0.5	E512AM1F
E-0413			15.8	0.24	E0413M1/1
D-0461A	25	80	27		D-461A
D40V12/DE					D40V12/DE
K40/12	10,5				K40/12
K40/1/12	10,5				K40/1/12

### OTHER SOLENOIDS TYPES:



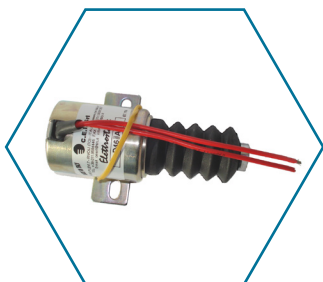
E-0413/ E-0423



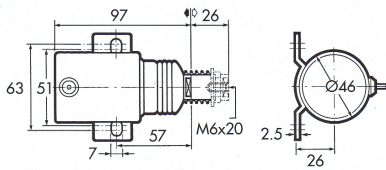
E-0413/ E-0423

24 V

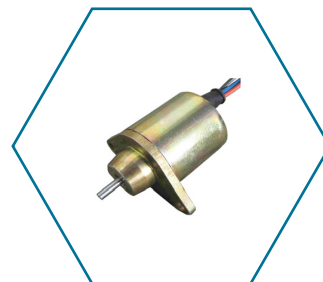
Model	Max. length of the stroke (mm)	Force at 25mm (N)	Pull current (A)	Hold current (A)	Ref. Elettrostart
EH-0522	40	66	23	0.28	E522AM1F
D-0462A	25	80	13		D-462A
E-0423			7.7	0.14	E0423M1/1



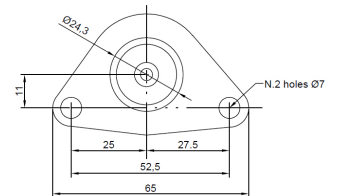
D-0461A/ D-0462A



D-0461A/ D-0462A



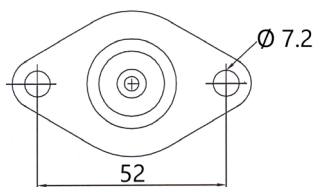
K40/12



K40/12



K40/1/12



K40/1/12



D40V12/DE

# HIGH PERFORMANCE SOLENOIDS

**BERMAN**  
BERMANTEC.COM

## *Elettrostart*

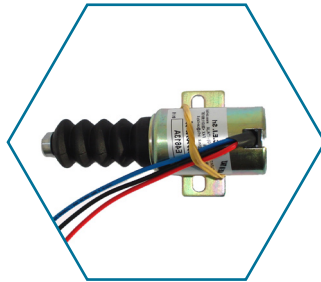
### DOUBLE COIL SOLENOIDS CONTINUOUS DUTY

FOR PULLING:

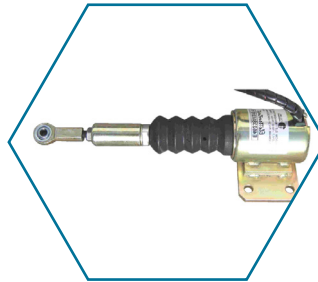
E 46-SERIES:



E-4611A/ E-4621A



E-4613A/ E-4623A



E-4626SM2/SY5



E-4613CM2



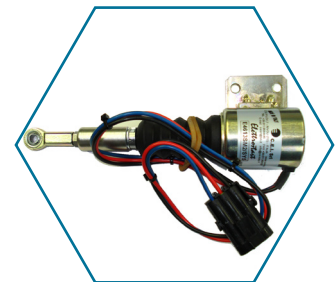
E-4626C2M2/SY2



E-4626C2M2/SY4



E-4613CM1/SY3



E-4613SM2/SY5

#### 12 V

#### 24 V

Model	Max. length of the stroke (mm)	Force at 25mm (N)	Pull current (A)	Hold current (A)	Ref. Elettro-start
E-4611A	26	70	40	0.6	E-4611A
E-4613A	26	70	40	0.6	E-4613A
E-4613CM2	26	70	40	0.6	E4613CM2
E-4613CM1/SY3	26	70	40	0.6	E4613CM1/SY3
E-4613SM2/SY5	26	70	40	0.6	E4613SM2/SY5

Model	Max. length of the stroke (mm)	Force at 25mm (N)	Pull current (A)	Hold current (A)	Ref. Elettro-start
E-4621A	26	70	23.5	0.3	E-4621A
E-4623A	26	70	23.5	0.3	E-4623A
E-4626SM2/SY5	26	70	23.5	0.3	E4626SM2/SY5
E-4626C2M2/SY2	26	70	23.5	0.3	E4626C2M2/SY2
E-4626C2M2/SY4	26	70	23.5	0.3	E4626C2M2/SY4

# HIGH PERFORMANCE SOLENOIDS

**BERMAN**  
BERMANTEC.COM

## Elektrostart

### CROSS REFERENCES AND ADDITIONAL INFORMATION

Model No.	Special application and possible replaces	Added features
E-0411	Repl. Woodward-no. 1502 (1504) 12C7U1	-
E-0510	Repl. Woodward-no. 2001 12E7U1	-
E-0610	Repl. Woodward-no. 2370 12E7U1	-
E-0421	Repl. Woodward-no. 1502 (1504) 24C7U1	-
E-0520	Repl. Woodward-no. 2001 24E7U1	-
E-0620	Repl. Woodward-no. 2370 24E7U1	-
E-4626SM2/SY5	Special for Cummins - no. 3935432	Weather Pack connector ¼ UNF swivel head with SBJ spring swivel (compensator of stroke)
E-4613CM2	Special for Cummins Replaces Woodward-no. 1751ES-12A3UC12B1S	-
E-4626C2M2/SY2	Special for Komatsu and Cummins-no. 3930234	Weather Pack connector ¼ UNF swivel head with SBJ spring swivel (compensator of stroke)
E-0413	Special for Ruggerini and Lombardini engines Repl. Woodward-no. 1502ES (1504ES) 12C7U1	
E-0423	Special for Ruggerini and Lombardini engines Repl. Woodward-no. 1502ES (1504ES) 24D7U1	
D40V12/DE	Kubota-no. 16851-60011	
K40/12	Special for Kubota, Cummins Repl. Woodward-no. 1503ES-12S5UC12S	
K40/1/12	Special for Yanmar, Cummins Repl. Woodward-no. 1503ES-12A5UC5S	
E-4626C2M2/SY4	Special for Komatsu and Cummins-no. 3928161	Weather Pack connector ¼ UNF compensator of stroke (SBJ)
E-4613CM1/SY3	Special for Komatsu, Cummins Repl. Woodward-no. 1751ES-12A3UC12B1S	Weather Pack connector Ext. thread M6 (P6 threaded dowel)
E-4613SM2/SY5	Special for Komatsu and Cummins-no. 3932529	Weather Pack connector ¼ UNF swivel head with SBJ spring swivel (compensator of stroke)

CONNECTOR CONVERSION MAY BE REQUIRED

➤ IF YOUR MODEL/BRAND IS NOT SHOWN IN OUR RANGE, PLEASE CONTACT US, WE TRY TO HELP YOU WITH AN EQUIVALENT SOLENOID

ALTHOUGH THE COMPARATIVE NOS. ARE EXAMINED TO THE BEST OF OUR KNOWLEDGE AND BELIEF, WE CAN ASSUME NO RESPONSIBILITY / LIABILITY FOR THE CORRECTNESS

